

Version 1



Version 2



KNIT | SKILL LEVEL: INTERMEDIATE

ABBREVIATIONS

K = Knit

P = Purl

Pat = Pattern

PM = Place marker

Rep = Repeat

Rnd(s) = Round(s)

RS = Right side

St(s) = Stitch(es)

Tog = Together

WS = Wrong side

SIZES

To fit chest measurement

XS/S/M 28-38" [71-96.5 cm]

L/XL/2XL 40-48" [101.5-122 cm]

3/4/5XL 54-62" [137-157.5 cm]

Finished chest

XS/S/M 55" [139.5 cm]

L/XL/2XL 63" [160 cm]

3/4/5XL 69½" [176.5 cm]

INSTRUCTIONS

The instructions are written for **XS/S/M**. If changes are necessary for larger sizes the instructions will be written **XS/S/M (L/XL/2XL-3/4/5XL)**. Numbers for each size are shown in the same color throughout the pat. When only one number is given in black, it applies to all sizes.

GAUGE

13 sts and 17 rows = 4" [10 cm] in stocking st.

WEEK 4

FINISHING

Fold and sew tog bottom of sleeves at corners of Front Panels 1 and 2 and Back Panel 3 to form armholes (just tacking corners tog) (as shown in Assembly Diagram).

Bottom Edging

With RS facing, B and longer needle, pick up and knit **41 (47-51)** sts evenly along top edge of Left Front (Panel 2). K**98 (110-122)** from st holder (Panel 3 - Back). Pick up and knit **40 (48-52)** sts evenly along bottom edge of Right Front (Panel 1). **179 (205-225)** sts.

1st row: (WS). *P1. K1. Rep from * to last st. P1.

2nd row: *K1. P1. Rep from * to last st. K1.

Rep last 2 rows until Ribbing measures 3" [7.5 cm], ending on a WS row.

Cast off in pat.

Front Panel and Collar Edging

With RS facing, MC and longer needle, pick up and knit **185 (197-215)** sts evenly along front edge opening (across side edge of right-front Bottom Ribbing, side edge of Panels 1 and 2, and side edge of left-front Bottom Ribbing).

1st row: (WS). *P1. K1. Rep from * to last st. P1.

2nd row: *K1. P1. Rep from * to last st. K1.

Rep last 2 rows until Ribbing measures 3" [7.5 cm], ending on a WS row.

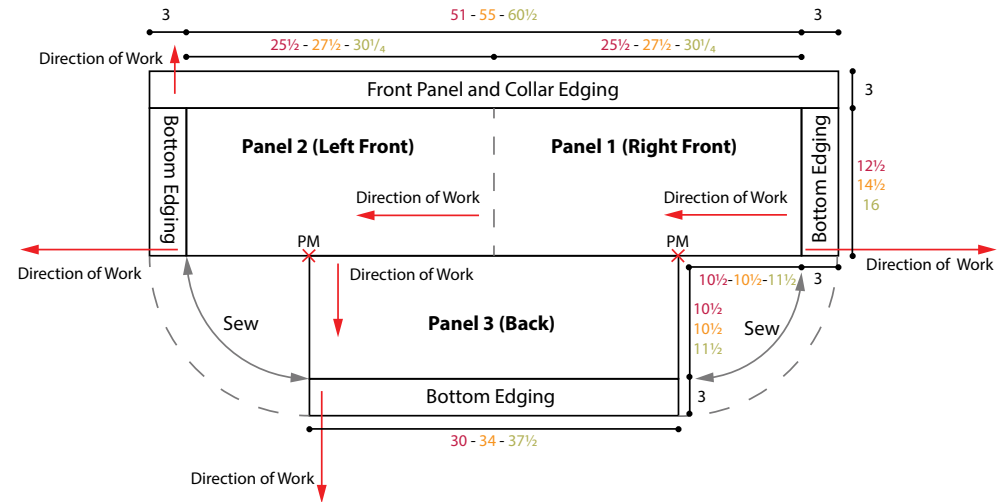
Cast off in pat.

Armhole Edging

With RS facing, MC and shorter needle, beg at bottom edging, pick up and knit **68 (68-74)** sts evenly around armhole opening. PM and join to work in rnd.

1st rnd: *K1. P1. Rep from * around. Rep last rnd until Ribbing measures 1½" [4 cm].

Cast off in pat.



ASSEMBLY DIAGRAM



Version 2 - Front



Version 1 - Back