

Version 1



Version 2



KNIT | SKILL LEVEL: INTERMEDIATE

ABBREVIATIONS

Approx = Approximately
Beg = Begin(ning)
K = Knit
P = Purl
Pat = Pattern
PM = Place marker

Rep = Repeat
RS = Right side
Sl1(3)Pwyib = Slip next 1 (3) stitches purlwise with yarn in back of work

Sl1(3)Pwyif = Slip next 1 (3) stitches purlwise with yarn in front of work
St(s) = Stitch(es)
WS = Wrong side

SIZES

To fit chest measurement

XS/S/M 28-38" [71-96.5 cm]
L/XL/2XL 40-48" [101.5-122 cm]
3/4/5XL 54-62" [137-157.5 cm]

Finished chest

XS/S/M 55" [139.5 cm]
L/XL/2XL 63" [160 cm]
3/4/5XL 69½" [176.5 cm]

GAUGE

13 sts and 26 rows = 4" [10 cm] in Mosaic Houndstooth Pat.

INSTRUCTIONS

The instructions are written for **XS/S/M**. If changes are necessary for larger sizes the instructions will be written **XS/S/M (L/XL/2XL-3/4/5XL)**. Numbers for each size are shown in the same color throughout the pat. When only one number is given in black, it applies to all sizes.

WEEK 3



PANEL 3: (BACK)

Notes:

- Mosaic Houndstooth Pat worked over multiple of 6 sts +2.
- Pattern uses only one color at a time in a row. Carry yarn when not in use loosely up side of work, taking new color from behind old color, being careful not to twist strands, when changing yarns at beg of row.
- When carrying yarn behind/in front of slipped sts, be sure yarn is loose enough to maintain gauge and prevent work from puckering.
- Panel 3 is worked off the edge of Panels 1 and 2.

With RS facing and Panel 1 on right-hand side and Panel 2 on left-hand side, PM **10½ (10½-11½)" [26.5 (26.5-29) cm]** in from bottom right and bottom left corners (as shown in Assembly Diagram on page 3).

With RS facing, A and longer needle, pick up and knit **98 (110-122)** sts evenly along edge of Panels 2 and 1 between markers. **Do not** join. Working back and forth across needle in rows, proceed as follows:
Transition row: (WS). Purl.
 Join B.

Proceed in Mosaic Houndstooth Pat as follows:

- 1st row:** (RS). With B, K1. *Sl1Pwyib. K5. Rep from * to last st. K1.
- 2nd row:** K6. Sl1Pwyif. *K5. Sl1Pwyif. Rep from * to last st. K1.
- 3rd row:** With A, K6. Sl1Pwyib. *K5. Sl1Pwyib. Rep from * to last st. K1.
- 4th row:** P1. *Sl1Pwyif. P5. Rep from * to last st. P1.
- 5th row:** With B, K1. *Sl3Pwyib. K1. Sl1Pwyib. K1. Rep from * to last st. K1.
- 6th row:** K2. *Sl1Pwyif. K1. Sl3Pwyif. K1. Rep from * to end of row.

7th row: With A, K4. *Sl1Pwyib. K5. Rep from * to last 4 sts. Sl1Pwyib. K3.

8th row: P3. *Sl1Pwyif. P5. Rep from * to last 5 sts. Sl1Pwyif. P4.

9th row: With B, K3. *Sl1Pwyib. K5. Rep from * to last 5 sts. Sl1Pwyib. K4.

10th row: K4. *Sl1Pwyif. K5. Rep from * to last 4 sts. Sl1Pwyif. K3.

11th row: With A, K4. *Sl3Pwyib. K3. Rep from * to last 4 sts. Sl3Pwyib. K1.

12th row: P1. *Sl3Pwyif. P3. Rep from * to last st. P1.

Rep 1st to 12th rows for Mosaic Houndstooth Pat until work from beg measures approx **10½ (10½-11½)" [26.5 (26.5-29)]**, ending on a WS row with B.

Break B.

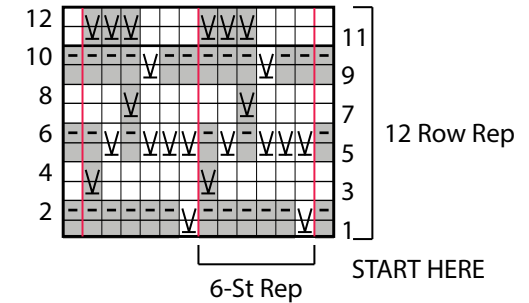
Next row: (RS). With A, knit.

Next row: Purl.

Transfer all **98 (110-122)** sts to st holder.

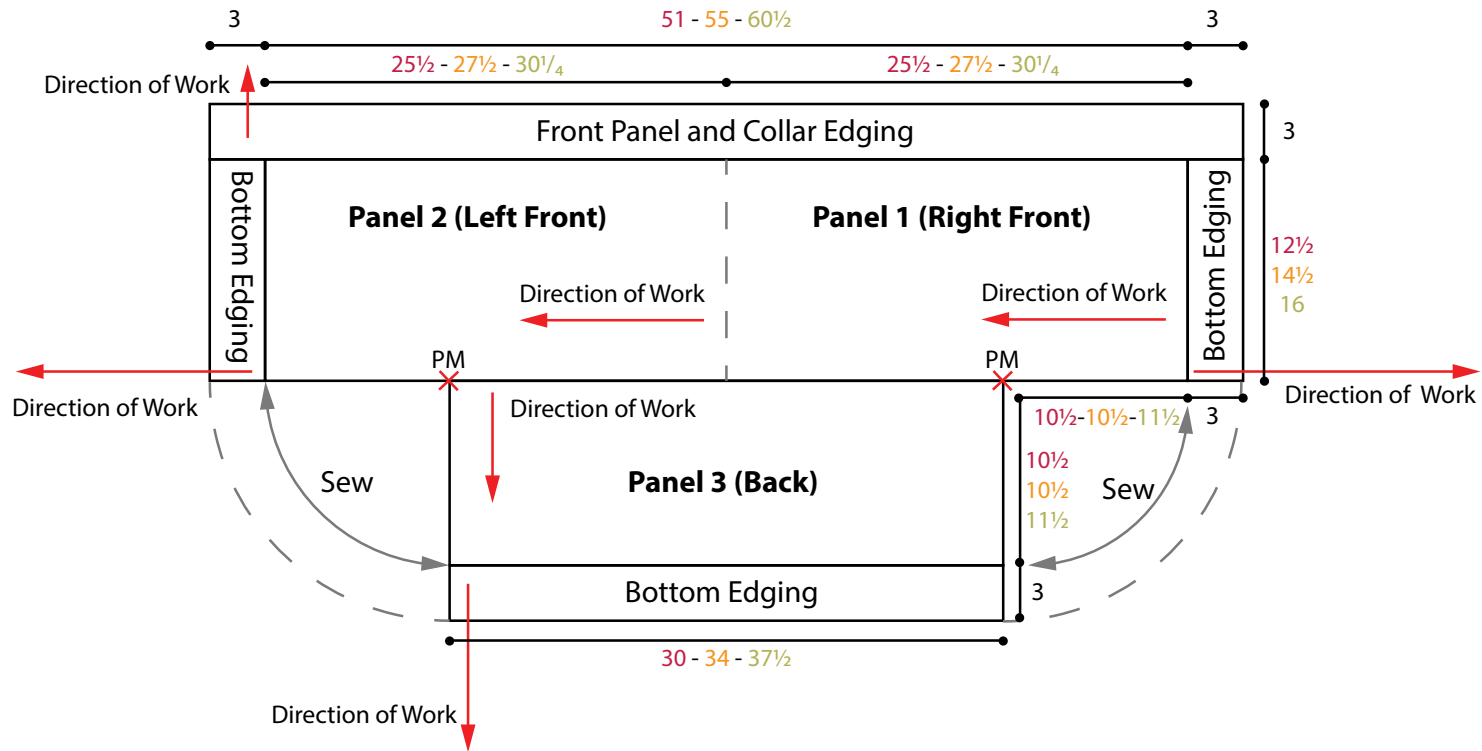
End of Week 3.

Mosaic Houndstooth Pat



KEY

- = With A, knit on RS rows. Purl on WS rows.
- = With B, knit on RS rows. Purl on WS rows.
- = With B, knit on WS rows.
- ⊓ ⊔ = Sl1Pwyib on RS rows. Sl1Pwyif on WS rows.



ASSEMBLY DIAGRAM