

Version 1



Version 2



KNIT | SKILL LEVEL: INTERMEDIATE

**ABBREVIATIONS**

**Approx** = Approximately  
**Beg** = Begin(ning)  
**Cont** = Continue(ity)  
**K** = Knit  
**Pat** = Pattern

**Rep** = Repeat  
**RS** = Right side  
**Sl1(2)Pwyib** = Slip next 1 (2) stitches purlwise with yarn in back of work

**Sl1(2)Pwyif** = Slip next 1 (2) stitches purlwise with yarn in front of work  
**St(s)** = Stitch(es)  
**WS** = Wrong side

**MATERIALS**

Sizes	XS/S/M	L/XL/2XL	3/4/5XL	
<b>Bernat® Fluffee™</b> (9.8 oz/280 g; 415 yds/380 m)				
<b>Version 1</b>				
<b>Main Color (MC)</b>	<b>1</b>	<b>2</b>	<b>2</b>	<b>ball(s)</b>
Ocean Depths (11008)	372/340	447/409	537/491	yds/m
<b>Contrast A</b>	<b>1</b>	<b>1</b>	<b>1</b>	<b>ball</b>
Citronella (11003)	190/174	232/212	284/260	yds/m
<b>Contrast B</b>	<b>1</b>	<b>1</b>	<b>1</b>	<b>ball</b>
Vivid Pink (11006)	294/269	304/278	327/299	yds/m
<b>Version 2</b>				
<b>Main Color (MC)</b>	<b>1</b>	<b>2</b>	<b>2</b>	<b>ball(s)</b>
Granite (11009)	372/340	447/409	537/491	yds/m
<b>Contrast A</b>	<b>1</b>	<b>1</b>	<b>1</b>	<b>ball</b>
Cream (11001)	190/174	232/212	284/260	yds/m
<b>Contrast B</b>	<b>1</b>	<b>1</b>	<b>1</b>	<b>ball</b>
Quartzite (11005)	294/269	304/278	327/299	yds/m

Size U.S. 11 (8 mm) Susan Bates® Silvalume® circular knitting needles 24" [61 cm] and 36" [91.5 cm] long **or size needed to obtain gauge**. Susan Bates® stitch holder. Susan Bates® stitch markers. Susan Bates® yarn needle.

## SIZES

To fit chest measurement

**XS/S/M** 28-38" [71-96.5 cm]

**L/XL/2XL** 40-48" [101.5-122 cm]

**3/4/5XL** 54-62" [137-157.5 cm]

Finished chest

**XS/S/M** 55" [139.5 cm]

**L/XL/2XL** 63" [160 cm]

**3/4/5XL**

69½" [176.5 cm]

## GAUGE

13 sts and 24 rows = 4" [10 cm] in Mosaic Check Pat.

## WEEK 1



**PANEL 1:** (Right Front)

## INSTRUCTIONS

The instructions are written for **XS/S/M**. If changes are necessary for larger sizes the instructions will be written **XS/S/M (L /XL/2XL-3/4/5XL)**. Numbers for each size are shown in the same color throughout the pat. When only one number is given in black, it applies to all sizes.

**Note:** Repeats in charts may not match indicated repeats in text, but both have been optimized for easier reading and still showcase the same pattern and repeats.

### Notes:

- Mosaic Check Pat worked over multiple of 4 sts.
- Pattern uses only one color at a time in a row. Carry yarn when not in use loosely up side of work, taking new color from behind old color, being careful not to twist strands, when changing yarns at beg of row.
- When carrying yarn behind/in front of slipped sts, be sure yarn is loose enough to maintain gauge and prevent work from puckering.

With MC and shorter needle, cast on **40 (48-52)** sts. **Do not** join. Working back and forth across needle in rows, proceed as follows:

**1st row:** (RS). With MC, knit.

**2nd row:** Purl. Join A.

**3rd row:** With A, K3. \*Sl2Pwyib. K2. Rep from \* to last st. K1.

**4th row:** K3. \*Sl2Pwyif. K2. Rep from \* to last st. K1.

**5th row:** With MC, knit.

**6th row:** Purl.

**7th row:** With A, K1. \*Sl2Pwyib. K2. Rep from \* to last 3 sts. Sl2Pwyib. K1.

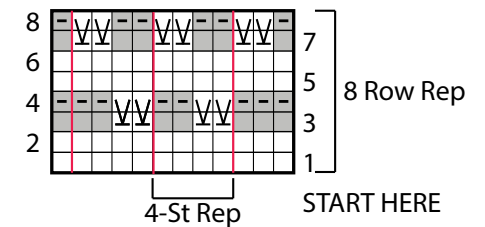
**8th row:** K1. \*Sl2Pwyif. K2. Rep from \* to last 3 sts. Sl2Pwyif. K1.

Rep 1st to 8th rows for Mosaic Check Pat until work from beg measures approx **25½ (27½-30¼)" [65 (70-77) cm]**, ending on RS row with MC.

**Do not** cast off. Break A. Cont with Panel 2.

*End of Week 1.*

## Mosaic Check Pat



### KEY

- = With MC, knit on RS rows. Purl on WS rows.
- = With A, knit on RS rows. Purl on WS rows.
- ▣ = With A, knit on WS rows.
- ▤ = Sl1Pwyib on RS rows. Sl1Pwyif on WS rows.