



MATERIAL

Caron® One Pound™ (16 oz/454 g; 812 yds/742 m)

Contrast A Black (10503) **2 balls**

Contrast B Off White (10514) **1 ball**

Caron® Jumbo™ (12 oz/340 g; 659 yds/602 m)

Contrast C Lush (09057) **1 ball**

Size U.S. 8 (5 mm) Susan Bates® Silvalume® circular knitting needle 36" [90.5 cm] long **or size needed to obtain gauge.** Susan Bates® yarn needle.



KNIT | SKILL LEVEL: **EASY/ INTERMEDIATE**

ABBREVIATIONS

Approx = Approximately

Cont = Continue(ity)

Dec = Decreasing

K = Knit

K2tog = Knit next 2 stitches together

P = Purl

P2togtbl = Purl next 2 stitches together through back loops

Pat = Pattern

Rep = Repeat

RS = Right side

Ssk = Slip next 2 stitches knitwise one at a time. Pass them back onto left-hand needle, then knit through back loops together

St(s) = Stitch(es)

WS = Wrong side

MEASUREMENTS

For Left Front: Approx 17½" [44.5 cm] wide x 30" [76 cm] long from shoulder.

GAUGES

16 sts and 20 rows = 4" [10 cm] in stocking st.

17 sts and 32 rows = 4" [10 cm] in Mosaic St Pat.

INSTRUCTIONS

With RS facing, slip next 15 sts onto a st holder, join corresponding color to rem sts and pat from spare needle across next 79 sts. (See Chart III on page 2).

1st row of Chart III is complete. Work 3 rows even in pat.

1st row: (RS). ssk. Pat to end of row. 78 sts.

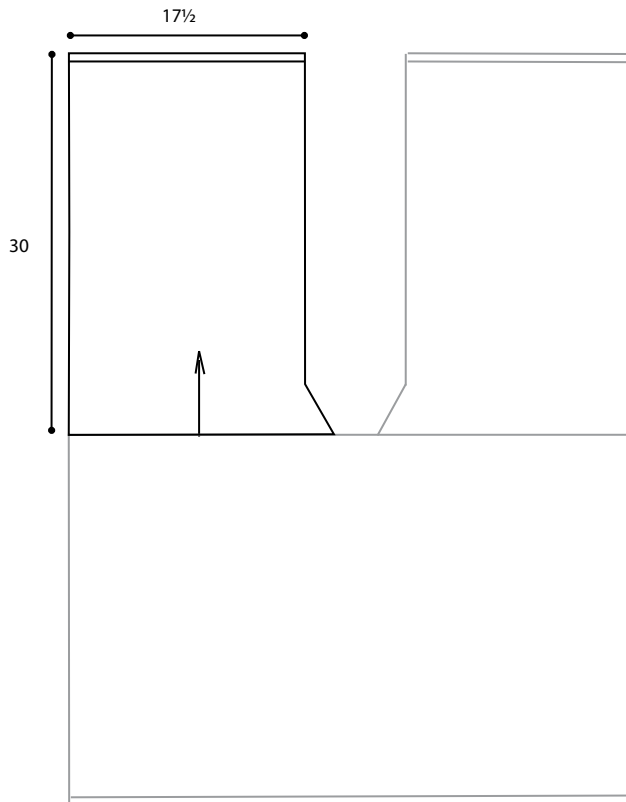
2nd row: Pat to last 2 sts. P2togtbl. Rep last 2 rows once more, then 1st row once. 74 sts.

Cont in Check Mosaic Pat III (see Chart), noting 18-st rep will be worked 4 times with 1 st at each end of row as seldge st in garter st until front from dividing row (shoulder) measures same length as Back, ending on 16th row of pat.

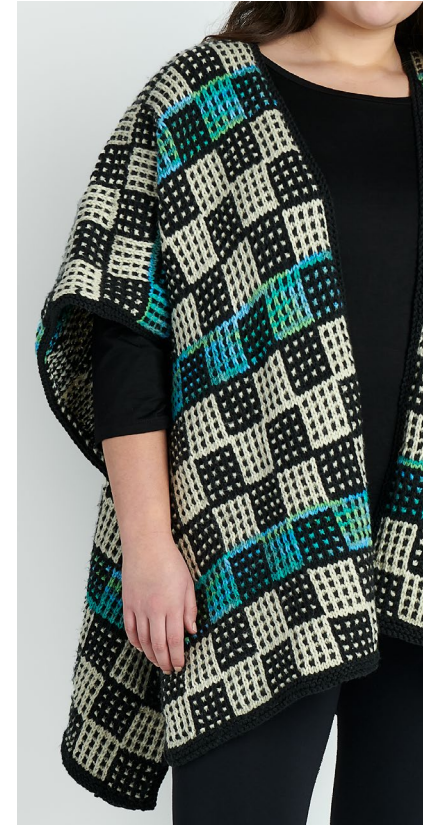
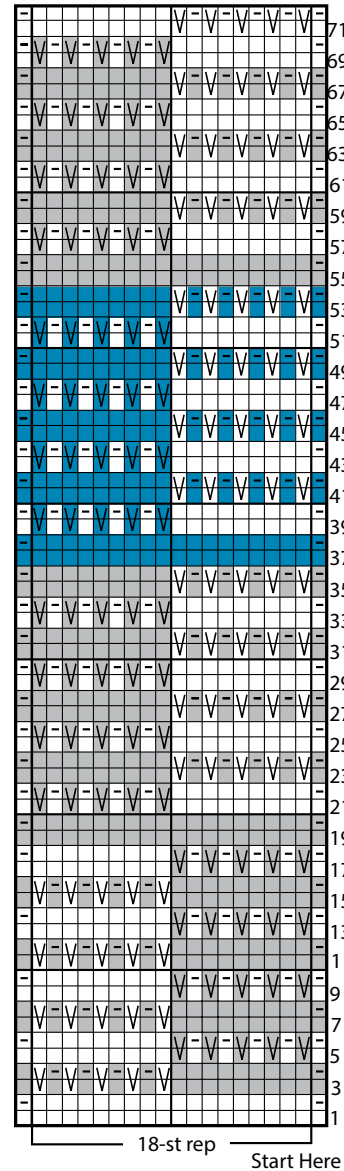
Next row: (Dec row - RS). With A, knit, (K11. K2tog) 5 times. K9. 69 sts.

Knit 4 rows (garter st). Cast off knitwise (WS).


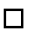



Week 3 is complete.



Check Mosaic Pat III (Left Front)



Key

-  Contrast A
-  Contrast B
-  Contrast C
-  Sl1Pwyib on RS rows.
-  Sl1Pwyif on WS rows.