



KNIT | SKILL LEVEL: EASY/ INTERMEDIATE

ABBREVIATIONS

| | | | | | |
|-----------------|---------------|----------------|-------------------------------|----------------|--------------|
| Approx = | Approximately | K2tog = | Knit next 2 stitches together | Rep = | Repeat |
| Cont = | Continue(ity) | P = | Purl | Rem = | Remaining(s) |
| Dec = | Decreasing | P2tog = | Purl next 2 stitches together | RS = | Right side |
| K = | Knit | Pat = | Pattern | St(s) = | Stitch(es) |
| | | | | WS = | Wrong side |

MEASUREMENTS

For Right Front: Approx 17½" [44.5 cm] wide x 30" [76 cm] long from shoulder.

GAUGES

16 sts and 20 rows = 4" [10 cm] in stocking st.
17 sts and 32 rows = 4" [10 cm] in Mosaic St Pat

INSTRUCTIONS

Split for fronts and shape neck:

1st row: (RS). Pat across 79 sts.
Turn. Leave rem sts on a spare needle. (See Chart II on page 2).
1st row of Chart II is complete.

Work 3 rows even in pat.

1st row: (RS). Pat to last 2 sts. K2tog. 78 sts.

2nd row: P2tog. Pat to end of row. Rep last 2 rows once more, then 1st row once. 74 sts.

Cont in Check Mosaic Pat II, noting 18-st rep will be worked 4 times with 1 st at each end of row as selvedge st in garter st until Front from dividing row (shoulder) measures same length as Back, ending on 16th, row of pat.

Next row: (Dec row - RS). With A, knit. (K11. K2tog) 5 times. K9. 69 sts.

Knit 4 rows (garter st). Cast off knitwise (WS).

Week 2 is complete.

MATERIAL

Caron® One Pound™ (16 oz/454 g; 812 yds/742 m)

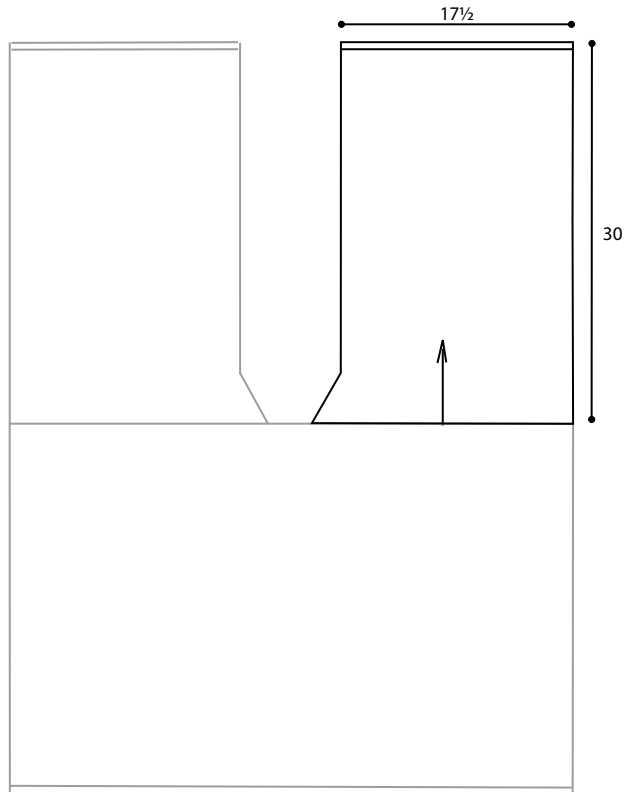
Contrast A Black (10503) **2 balls**

Contrast B Off White (10514) **1 ball**

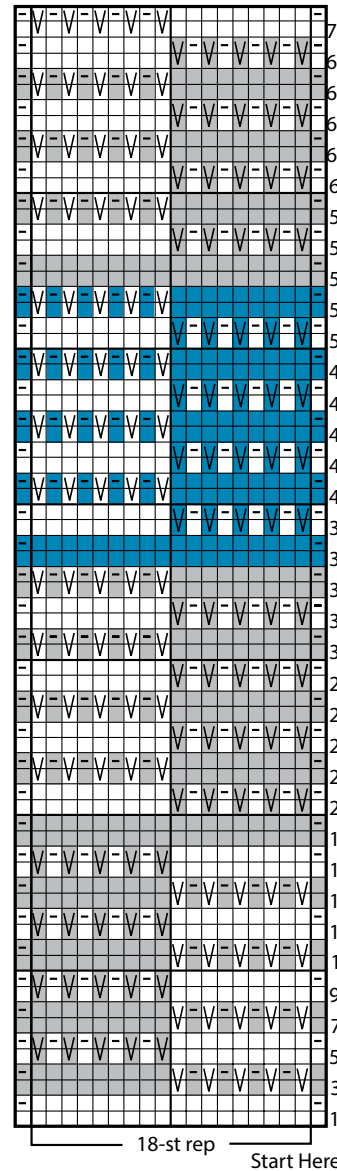
Caron® Jumbo™ (12 oz/340 g; 659 yds/602 m)

Contrast C Lush (09057) **1 ball**

Size U.S. 8 (5 mm) Susan Bates® Silvalume® circular knitting needle 36" [90.5 cm] long **or size needed to obtain gauge.** Susan Bates® yarn needle.



Check Mosaic Pat II (Right Front)



Key

- Contrast A
- Contrast B
- Contrast C
- ⌞ ⌞ S11Pwyib on RS rows.
- ⌞ ⌞ S11Pwyif on WS rows.