



Marly Bird
from Marly Bird



KNIT | SKILL LEVEL: INTERMEDIATE

ABBREVIATIONS

Beg = Beginning

Cont = Continue(ity)

K = Knit

K2tog = Knit next 2 stitches together

Kfb = Knit into front and back of next stitch

P = Purl

PM = Place marker

Rem = Remain(ing)

Rep = Repeat

Rnd = Round(s)

Sl1 = Slip next stitch knitwise

Sm = Slip marker

Ssk = Slip next 2 stitches knitwise one at a time. Pass them back onto left-hand needle, then knit through back loops together

St(s) = Stitch(es)

Tog = Together

MATERIALS

Caron® Big Donut O'Go™ (9.9 oz/280 g; 502 yds / 459 m)

Lemon Plum (29002) **1 O'Go**

Color A: Light Purple

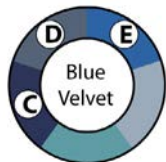
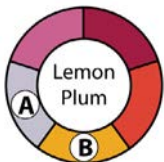
Color B: Yellow

Blue Velvet (29007)

Color C: Dark Blue,

Color D: Dark Gray

Color E: Light Blue



Hat: Sizes U.S. 5 [3.75 mm] and U.S. 6 [4 mm] circular knitting needles 16" [40 cm] long **or size needed to obtain gauge.**

Mittens: Set of five U.S. 5 [3.75 mm] and U.S. 6 [4 mm] double-pointed knitting needles **or size needed to obtain gauge.** Stitch markers. Yarn needle.

SIZES

Mittens: To fit adult palm 8" [20.5 cm]

Hat: To fit adult head 22" [56 cm]

GAUGE

20 sts and 24 rows = 4" [10 cm] in Fair Isle Pat with U.S. 6 [4 mm] needles.

INSTRUCTIONS

Notes:

- To begin working with the O'Go format, carefully cut plastic tie where the ends of the O'Go meet.
- Pull tie to remove.

- For this pattern, separate colors by gently pulling apart and cutting at the color transition. Each color is ready to use. Designate each color A, B, C, D, E as indicated in Materials.
- Smaller needles are used for cuff of mitten and brim of hat, larger needles used for body of mitten, thumb, and body of hat.
- When working from the chart, carry yarn not in use loosely across WS of work but never over more than 5 sts. When it must pass over more than 5 sts, weave it over and under color in use (watch video for help). The colors are never twisted around one another.

SHARON MITTENS

CUFF

With set of smaller double-pointed needles and C, cast on 40 sts. Divide sts evenly onto 4 dpn's (10, 10, 10, 10) sts. PM for beg of rnd.
1st rnd: *K2. P2. Rep from * around.
 Rep last rnd of (K2. P2) ribbing for 3" [7.5 cm].

BODY

Change to set of larger double-pointed needles and knit in Chart until 20th rnd will be complete, *reading rnds from right to left*.
See Chart on page 3.

Right Thumb Opening

1st rnd: Knit in Chart across first 23 sts. Drop working yarn. With scrap of yarn, K7. Slip just worked 7 sts back onto left-hand needle and Knit in Chart t to end of rnd.

Left Thumb Opening

1st rnd: Knit in Chart across first 11 sts. Drop working yarn. With scrap of yarn, K7. Slip just worked 7 sts back onto left-hand needle and Knit in Chart t to end of rnd.

Both Mittens

Cont in Chart until 40th row of chart will be complete. Break B, C, D and E.

Shape top: 1st rnd: With A, (K2tog. K16. ssk. PM) twice.

2nd rnd: (K2tog. Knit to 2 sts before marker. Ssk. Sm) twice.

Rep last rnd until 8 sts rem. Rearrange sts onto 2 needles, 4 sts on each needle. Graft 2 sets of 4 sts tog.

THUMB

Working along bottom of scrap yarn, with larger needles, pick up right leg of each of the 7 sts under scrap yarn sts. Then, pick up the right leg of each of 7 sts above scrap yarn sts. Pull scrap yarn off sts.

Divide these 14 sts onto 3 needles (4, 5, 5) sts. Join in rnd. PM on first st.

With C, knit 14 rnds even

Next rnd: (K1. K2tog) 4 times. K2. 10 sts.

Next rnd: (K2tog) 5 times. Break yarn. Thread through rem 5 sts and fasten securely.

SHARON HAT

BRIM

With smaller circular needle and C, cast on 108 sts. Join in rnd. PM for beg of rnd.

1st rnd: *K2. P2. Rep from * around.

Rep last rnd of (K2. P2) ribbing for 3" [7.5 cm].

Next rnd: *Kfb. K27. Rep from * 3 times more. 112 sts.

BODY

Change to larger circular needle and knit in Chart until 33rd rnd will be complete, *reading rnds from right to left* and noting 28-st rep will be worked 4 times.
See Chart on page 4.

SHAPE CROWN

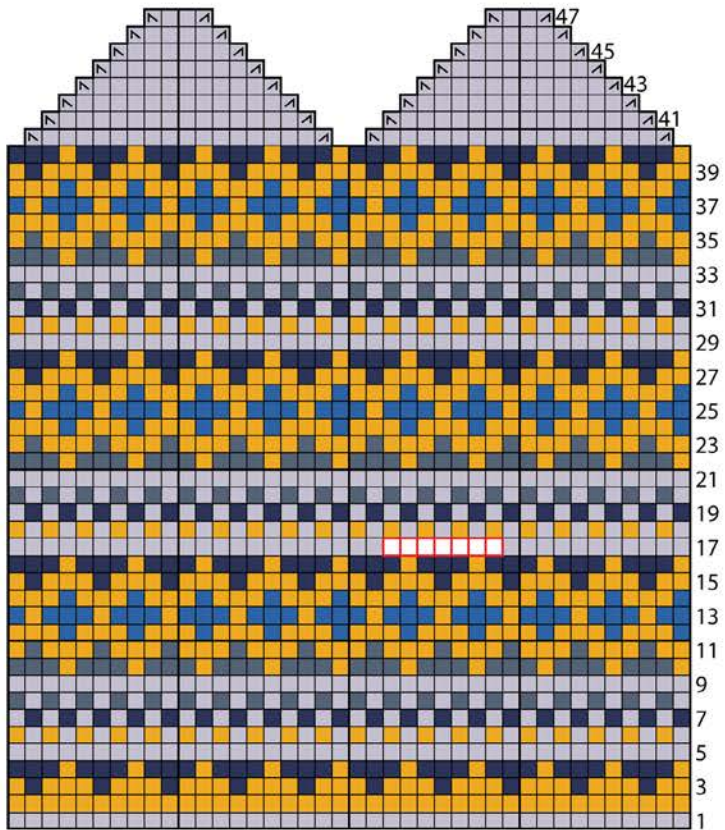
1st rnd: (K2tog. K24. ssk. PM) 4 times.

2nd rnd: (K2tog. Knit to 2 sts before marker. ssk. PM) 4 times.

Rep last rnd until there are 24 sts rem.

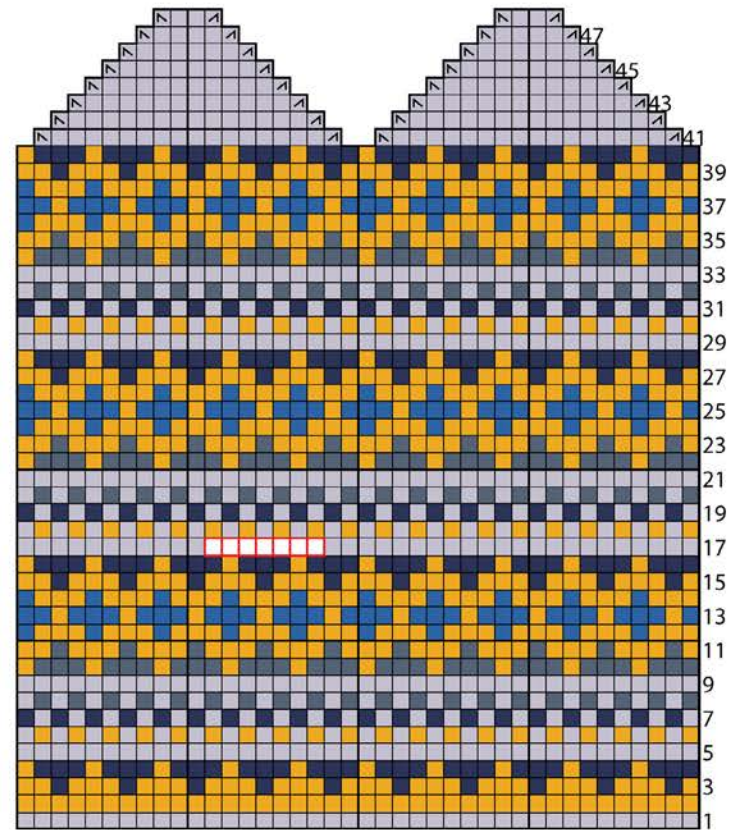
Break yarn. Thread yarn through rem sts. Pull tightly. Fasten securely.

Left Hand



Start Here

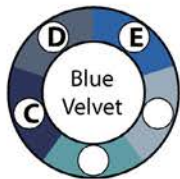
Right Hand

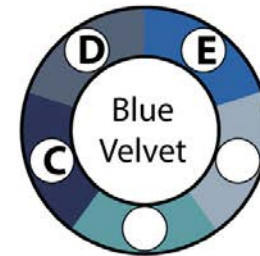
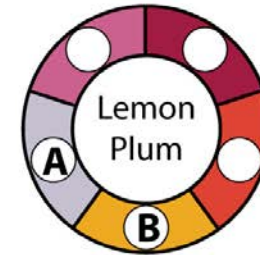
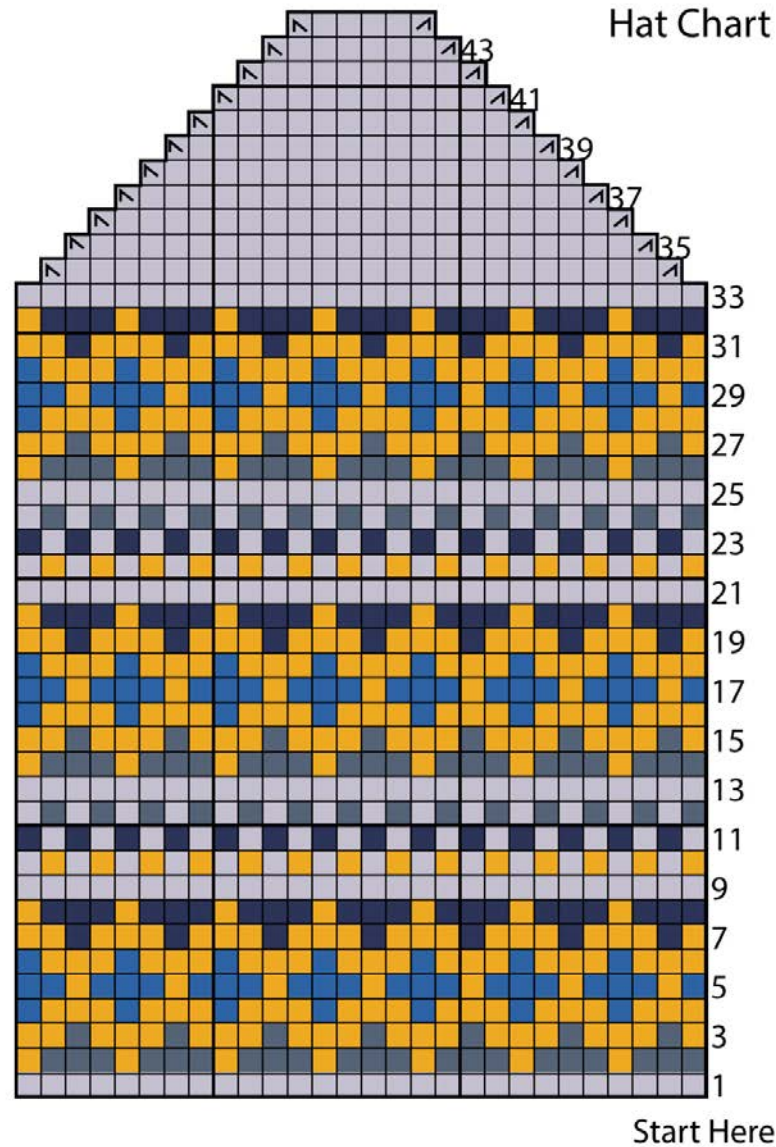


Start Here

Key

- A
- B
- C
- D
- E
- ▣ K2tog
- ▣ ssk
- Work sts with scrap yarn for thumb





Key

- A
- B
- C
- D
- E
- K2tog
- ssk