



chic sheep
BY Marly Bird

Road to Success Chic Hat

Take a trip with a cable twist hat that sports slouchy comfort and a pompom to finish it off. Choose any color that makes you happy while you knit and wear this clever look.



LW5910

©2017 Coats & Clark



knitting



Designed by Marly Bird

What you will need:

Red Heart® Chic Sheep by Marly Bird™: 1 ball 5632 Polo

Susan Bates® Circular Knitting Needles: 4.5mm [US 7] and 5mm [US 8] 16" (40.5 cm)

Susan Bates® Double pointed needles: One set 5mm [US 8]

Susan Bates® split lock stitch markers

Susan Bates® Easy Pompon Maker, 2" (5 cm) diameter

Yarn needle, cable needle

GAUGE: 18 sts = 4" (10 cm); 27 rows = 4" (10 cm) in Stockinette st with larger needles, after blocking. **CHECK YOUR GAUGE. Use any size needles to obtain the gauge.**

BUY YARN



RED HEART® Chic Sheep by Marly Bird™, Art. R170 100% Merino Wool available 3.5 oz (100 g), 186 yd (170 m) balls



Hat measures 18" (45.5) around brim (unstretched), and 11½" (29 cm) in length.

SPECIAL STITCHES

Ssk (slip, slip, knit) = Slip next two sts knitwise to right needle, insert point of left needle through front of sts, knit these sts together through back loop.

CABLE STITCHES

2/2 LC (2 over 2 left cross) = Slip next 2 sts to cable needle and hold in front, k2 from left needle, then k2 from cable needle.

2/2 RC (2 over 2 right cross) = Slip next 2 sts to cable needle and hold in back, k2 from left needle, then k2 from cable needle.

CABLE PANEL

(Worked in the round over 22 sts)

Round 1: K1 tbl, p2, k16, p2, k1 tbl.

Round 2: K1 tbl, p2, k2, 2/2 RC, k4, 2/2 LC, k2, p2, k1 tbl.

Round 3: K1 tbl, p2, k16, p2, k1 tbl.

Round 4: K1 tbl, p2, 2/2 RC, k8, 2/2 LC, p2, k1 tbl.

Round 5: K1 tbl, p2, k16, p2, k1 tbl.

Round 6: K1 tbl, p2, k4, 2/2 RC, 2/2 LC, k4, p2, k1 tbl.

Repeat Rounds 1-6 for Cable Panel.

HAT

Ribbing

With smaller needle, cast on 90 sts. Join round being careful to not twist cast on edge, and mark first st.

Rounds 1-6: * K1 tbl, p1; repeat from * around.

Body

Change to larger needles.

Next 2 rounds:

Round 1: K1 tbl, p2, k16, p2tog, p1, k1 tbl (the last 22 sts count as Row 1 of Cable Panel), place marker to mark end of Cable panel, knit to end – 89 sts.

Round 2: Work in established Cable Panel over first 22 sts, knit to end. Work in established patterns until piece measures 9½" (24 cm) from cast-on edge, ending after a Round 3 of Cable Panel.

Crown

Remove Cable Panel marker.

Shape crown as follows, changing to double-pointed needles when work no longer fits comfortably on circular needle.

Next 15 rounds:

Round 1: K7, ssk, k2tog, [k14, ssk, k2tog] 3 times, k15, k2tog, k7 – 80 sts.

Round 2: Knit.

Round 3: K6, ssk, k2tog, [k12, ssk, k2tog] 4 times, k6 – 70 sts.

Round 4: Knit.

Round 5: K5, ssk, k2tog, [k10, ssk, k2tog] 4 times, k5 – 60 sts.

Round 6: Knit.

Round 7: K4, ssk, k2tog, [k8, ssk, k2tog] 4 times, k4 – 50 sts.

Round 8: Knit.

Round 9: K3, ssk, k2tog, [k6, ssk, k2tog] 4 times, k3 – 40 sts.

Round 10: Knit.

Round 11: K2, ssk, k2tog, [k4, ssk, k2tog] 4 times, k2 – 30 sts.

Round 12: Knit.

Round 13: K1, ssk, k2tog, [k2, ssk, k2tog] 4 times, k1 – 20 sts.

Round 14: Knit.

Round 15: [Ssk, k2tog] 5 times – 10 sts.

continued...



LW5910 Road to Success Chic Hat



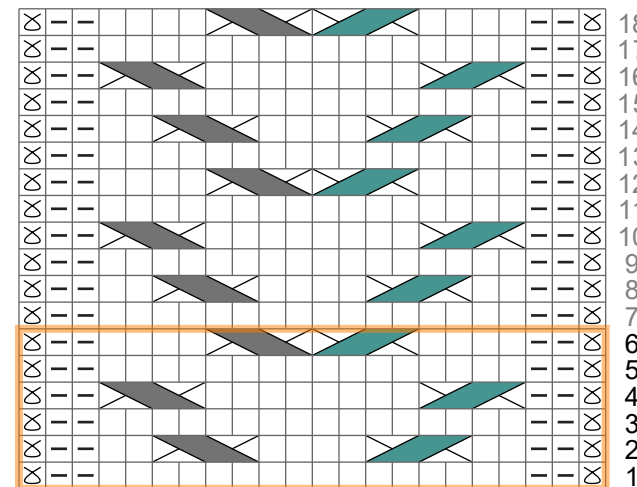
Cut yarn and use yarn needle to thread tail through each remaining st knitwise. Pull tail tight to close top. Weave tail in on wrong side of hat to secure.

FINISHING

Make pompom and sew to top of hat. Weave in all remaining loose ends.

ABBREVIATIONS

k = knit; **k2tog** = knit next 2 sts together; **p** = purl; **p2tog** = purl next 2 sts together; **st(s)** = stitch(es); **tbl** = through back loop; **[]** = work directions in brackets the number of times specified; *** or **** = repeat whatever follows the * or ** as indicated.



Symbol Key

- Knit Purl
- Knit through back loop
- 2/2 LC
- 2/2 RC
- Repeat

