



chic sheep

Capriciously Chic Hat

Spirited cables are the basis for this striking two-tone design. As you knit in the round, any color changes are made as if you are knitting a Fair Isle pattern. You're sure to turn heads when you wear this comfy Chic Sheep hat!



knitting



Designed by Marly Bird

What you will need:

Red Heart® Chic Sheep by Marly Bird™:
1 ball each 5673 Fairy Tale **A** and 5622 Dragon Fruit **B**

Susan Bates® Circular Knitting Needles: 4.5mm [US 7] and 5mm [US 8], 16" (40.5 cm)

Susan Bates® Double Pointed Needles: One set 5mm [US 8]

Susan Bates® split lock stitch markers

Cable Needle

Yarn needle

GAUGE: 18 sts and 27 rows = 4" (10 cm) in Stockinette st using larger needle, **CHECK YOUR GAUGE.** Use any size needles to obtain the gauge.

BUY YARN



RED HEART® Chic Sheep by Marly Bird™, Art. R170 100% Merino Wool available 3.5 oz (100 g), 186 yd (170 m) balls

Hat measures 21½ (54.5) at full circumference and 9" (23 cm) in length.

NOTE

When working with two colors on the same row use the Fair Isle technique of changing colors.

CABLE STITCHES

1/1 LC (2 over 2 left cross) = Slip next st to cable needle and hold in front, k1 from left needle, then k1 from cable needle.

1/1 RC (2 over 2 right cross) = Slip next st to cable needle and hold in back, k1 from left needle, then k1 from cable needle.

2/2 LC (2 over 2 left cross) = Slip next 2 sts to cable needle and hold in front, k2 from left needle, then k2 from cable needle.

2/2 RC (2 over 2 right cross) = Slip next 2 sts to cable needle and hold in back, k2 from left needle, then k2 from cable needle.

PATTERN

Brim

With **A** and smaller circular needle, cast on 104 sts.

Join round being careful to not twist cast-on edge, and mark first st.

Rounds 1-8: * K1 through the back loop, p1; repeat from * to end of round.

Body

Change to larger circular needle.

Round 1: With **A**, knit.

Round 2: * With **A**, k2, with **B**, k4, with **A**, k2; repeat from * to end of round. Maintain knitting each st with its same color yarn throughout.

Round 3: Knit.

Round 4: * 2/2 LC, 2/2 RC; repeat from * to end of round.

Round 5 and 6: Knit.

Round 7: * 2/2 RC, 2/2 LC; repeat from * to end of round.

Round 8 and 9: Knit.

Repeat Rounds 4-9 4 more times. Then Rounds 4 and 5 only once more.

Crown

Round 1: K2tog around - 52 sts.

Slip all sts onto double pointed needles.

Round 2: Knit.

Round 3: * 1/1 RC, 1/1 LC; repeat from * around.

Round 4: K2tog around - 26 sts.

Round 5: Knit.

Round 6: K2tog around - 13 sts.

Cut yarn, leaving an 8" [20.5 cm] tail.

FINISHING

Using yarn needle to thread the yarn through remaining live sts, then pull tight like a drawstring. Weave to inside of hat.

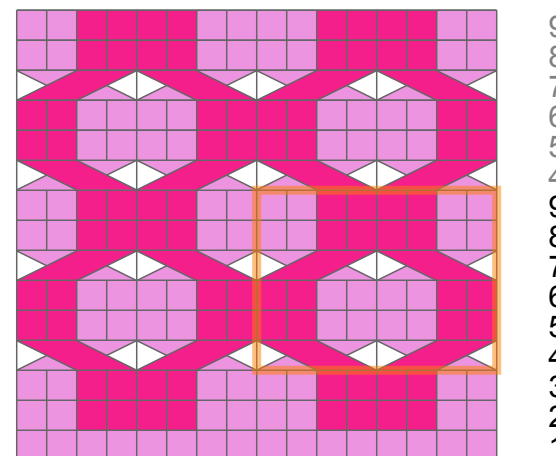
Weave in all loose ends.

ABBREVIATIONS



A, B = Color A, Color B; **inc** = increase; **k** = knit; **k2tog** = knit next 2 sts together; **st(s)** = stitch(es); * **or** ** = repeat whatever follows the * or ** as indicated.

See next page for chart and alternate photo





Symbol Key

- Knit
- Repeat
-  2/2 LC (2 over 2 left cross)
-  2/2 RC (2 over 2 right cross)

