

CLUE #4 ABBREVIATIONS

Approx = Approximately

Beg = Beginning

Cont = Continue(ity)

Cr3B = Slip next 2 stitches onto cable needle and leave at back of work. K1, then K2 from cable needle.

Cr3F = Slip next stitch onto cable needle and leave at front of work. K2, then K1 from cable needle.

K = Knit

Kfb = Increase 1 stitch by knitting into front and back of next stitch

K2tog = Knit next 2 stitches together

Pat = Pattern

PM = Place marker

Rem = Remaining

Rep = Repeat

RS = Right side

Sl1Pwyib = Slip next stitch purlwise with yarn in back of work

Sl1Pwyif = Slip next stitch purlwise with yarn in front of work

St(s) = Stitch(es)

WS = Wrong side



GAUGE

10 sts and 18 rows = 4" [10 cm] in Wild Oats Pat.

CLUE #4

INSTRUCTIONS

Notes:

- This week begins with 77 sts on your needles and ends with 77 sts on your needles.
- Wild Oats Pat worked over 108 sts - multiple of 7 sts + 3.
- See chart on page 2.

Stripe Pat

With C, work 6 rows. Break C. Join D.

With D, work 6 rows. Break D. Join C.

These 12 rows form Stripe Pat.

Break B, Join D. PM at beg of first row.

1st row: (RS). With D, knit.

2nd row: Kfb. *K1. Kfb. K2. Kfb. Rep from * to last st. K1. 108 sts. Break D. Join C.

Beg working in Stripe Pat and proceed in pat as follows:

1st row: (RS). With C, K1. *K1. Sl1Pwyib. K4. Sl1Pwyib. Rep from * to last 2 sts. K2.

2nd row: K2. *Sl1Pwyif. K4. Sl1Pwyif. K1. Rep from * to last st. K1.

3rd row: As 1st row.

4th row: As 2nd row.

5th row: K1. *K1. Cr3F. Cr3B. Rep from * to last 2 sts. K2.

6th row: Knit. Break C. Join D. These 6 rows form Wild Oats Pat. First 6 rows of Stripe Pat are complete.

Keeping cont of Stripe Pat, cont in Wild Oats Pat until work from marker measures approx 12" [30.5 cm], ending with 5 rows of D and on a 5th row of Wild Oats Pat.

KNIT ALONG BLANKET 2019 | CLUE #4

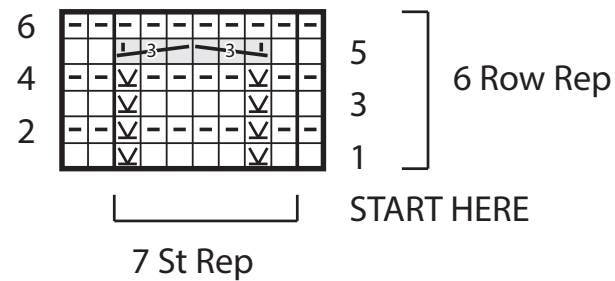
Next row: (WS). With D, K2tog.
*K1. K2tog. K2. K2tog. Rep from *
to last st. K1. 77 sts.

Do not cast off.

See you next week!

Clue #4

Wild Oats Pattern



KEY

= Knit on RS rows.

= Knit on WS rows.

= S11Pwyib on RS rows. S11Pwyif on WS rows.

= Cr3B

= Cr3F