

## CLUE #2 ABBREVIATIONS

**Approx** = Approximately

**Beg** = Beginning

**Cont** = Continue(ity)

**K** = Knit

**MB (Make bobble-worked on**

**WS)** = Pfbf. 3 sts. Turn. K3. Turn.

P2. Pass second st on right-hand

needle over first st and off the

needle. P1. Slip first 2 sts from

right-hand needle back onto left-

hand needle. Pass second st on

left-hand needle over first and

off the needle. Slip rem st from

left-hand needle back onto right-

hand needle. Bobble complete.

Push Bobble to RS of work.

**P** = Purl

**Pfb** = Increase 1 stitch by purling into front and back of next stitch.

**Pfbf** = Increase 2 stitches by purling into front, back, and front of next stitch.

**Pat** = Pattern

**PM** = Place marker

**Rem** = Remaining

**Rep** = Repeat

**RS** = Right side

**St(s)** = Stitch(es)

**WS** = Wrong side



## GAUGE

7.5 sts and 14 rows = 4" [10 cm] in Bobble Stitch Pat.

## CLUE #2

## INSTRUCTIONS

### Notes:

- This week begins with 83 sts on your needles and ends with 83 sts on your needles.
- Bobble St Pat worked over 83 sts - multiple of 4 sts + 3.
- Carry D when not in use loosely up side of work.
- Bobbles are worked on WS rows and pushed to RS of work.
- See chart on page 2.

Join D. PM at beg of first row.

**1st row:** (RS). With D, knit.

**2nd row:** K1. Purl to last st. K1.

Join C.

**3rd row:** With C, knit.

**4th row:** K1. \*MB. K3. Rep from \* to last 2 sts. MB. K1. Break C.

**5th row:** With D, knit.

**6th row:** K1. Purl to last st. K1.

**7th and 8th rows:** Rep 5th and 6th rows once more. Join C.

**9th row:** With C, knit.

**10th row:** K1. \*K2. MB. K1. Rep from \* to last 2 sts. K2. Break C.

**11th row:** With D, knit.

**12th row:** K1. Purl to last st. K1. These 12 rows form Bobble Stitch Pat.

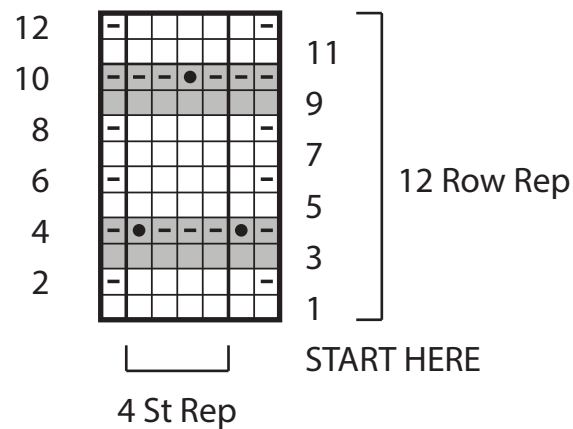
Cont in pat until work from marker measures approx 12" [30.5 cm], ending on 12th row of Bobble Stitch Pat. Remove marker.

**Do not** cast off.

See you next week!

### Clue #2

#### Bobble Stitch Pattern



#### KEY

- = With D, knit on RS rows. Purl on WS rows.
- = With C, knit on RS rows. Purl on WS rows.
- = With D, knit on WS rows.
- = With C, knit on WS rows.
- = With C, MB (Make Bobble)