

CLUE #5 ABBREVIATIONS

Alt = Alternate

K = Knit

Kfb = Increase 1 stitch by knitting into front and back of next stitch.

K2tog = Knit next 2 stitches together

Pat = Pattern

Rep = Repeat

RS = Right side

St(s) = Stitch(es)

WS = Wrong side

Yo = Yarn over



GAUGE

7 sts and 16 rows = 4" [10 cm] in garter stitch.

7½ sts and 13 rows = 4" [10 cm] in Diagonal Eyelet Pat.

CLUE #5

Notes:

- This week begins with 77 sts on needles and ends with 77 sts on needles.
- Diagonal Eyelet Pat worked over 82 sts - multiple of 6 sts + 4.
- See chart on page 2.

1st to 7th rows: With C, knit.

8th row: (WS). K3. *K11. Kfb. Rep from * to last 14 sts. K14. Break C. Join B. 82 sts.

With B, proceed in pat as follows:

1st row: (RS). K2. *K4. yo. K2tog. Rep from * to last 2 sts. K2.

2nd and alt rows: K1. Purl to last st. K1.

3rd row: K2. *K3. yo. K2tog. K1. Rep from * to last 2 sts. K2.

5th row: K2. *K2. yo. K2tog. K2. Rep from * to last 2 sts. K2.

7th row: K2. *K1. yo. K2tog. K3. Rep from * to last 2 sts. K2.

9th row: K2. *yo. K2tog. K4. Rep from * to last 2 sts. K2.

11th row: K1. yo. K2tog. *K4. yo. K2tog. Rep from * to last st. K1.

12th row: K1. Purl to last st. K1. These 12 rows form Diagonal Eyelet Pat.

Rep 1st to 12th rows of Diagonal Eyelet Pat once more. Break B. Join A.

Next row: (RS). With A, K3. *K11. K2tog. Rep from * to last 14 sts. K14. 77 sts.

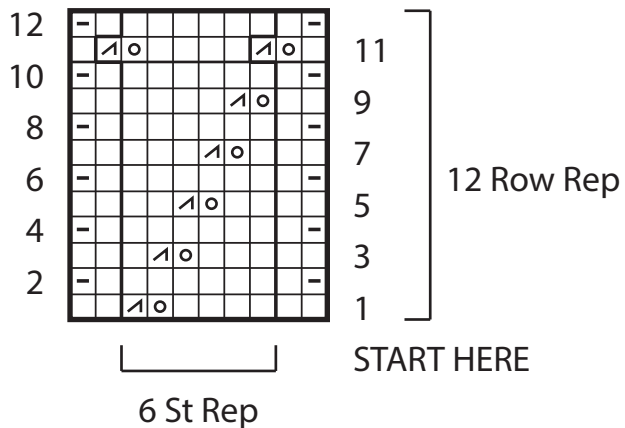
Next 7 rows: Knit.

Cast off loosely.

See you next week!

Clue #5

Diagonal Eyelet Pattern



KEY

- = Knit on RS rows. Purl on WS rows.
- = Knit on WS rows.
- = yo
- = K2tog