



### CLUE #3 ABBREVIATIONS

**Approx** = Approximately

**Beg** = Beginning

**Cont** = Continue(ity)

**K** = Knit

**Kfb** = Increase 1 stitch by knitting into front and back of next stitch

**Kfbf** = Increase 2 stitches by knitting into front and back and front of next stitch

**K2tog** = Knit next 2 stitches together

**P** = Purl

**Pat** = Pattern

**PM** = Place marker

**Pss** = Pass slipped stitch over

**Rep** = Repeat

**RS** = Right side

**SI1P** = Slip next stitch purlwise

**SI1Pwyib** = Slip next stitch purlwise with yarn in back of work

**SI1Pwyif** = Slip next stitch purlwise with yarn in front of work

**St(s)** = Stitch(es)

**WS** = Wrong side



### GAUGE

7 sts and 16 rows = 4" [10 cm] in garter stitch.

9.5 sts and 20 rows = 4" [10 cm] in Vertical Stripes Pat.

### CLUE #3

### INSTRUCTIONS

#### Notes:

- This week begins with 83 sts on needles and ends with 77 sts on needles.
- Vertical Stripes Pat worked over 105 sts - multiple of 2 sts +1.
- Carry yarn when not in use loosely up side of work.
- See chart on page 2.

Break D. Join B.

**1st row:** (RS). With B, \*K10. K2tog. Rep from \* to last 11 sts. K11. 77 sts.

**2nd to 5th rows:** Knit.

**6th row:** (WS). Kfb. (K2. Kfb) 12 times. K1. Kfbf. K1. (Kfb. K2) 12 times. Kfb. 105 sts.

Proceed in pat as follows:

PM at beg of next row. Join C when required.

**1st row:** (RS). With B, K2. \*SI1Pwyib. K1. Rep from \* to last st. K1.

**2nd row:** K1. \*P1. SI1Pwyif. Rep from \* to last 2 sts. P1. K1.

**3rd row:** With C, \*K1. SI1Pwyib. Rep from \* to last st. K1.

**4th row:** K1. \*SI1Pwyif. P1. Rep from \* to last 2 sts. SI1Pwyif. K1. These 4 rows form Vertical Stripes Pat.

Cont in pat until work from marker measures approx 6" [15 cm], ending on 4th row of Vertical Stripes Pat.

## KNIT ALONG BLANKET 2019 | CLUE #3

Break C. Remove marker.

**Next row:** (RS). With B, knit.

**Next row:** (WS). K2tog. (K2. K2tog) 12 times. K1. Sl1P. K2tog. pssso. K1. (K2tog. K2) 12 times. K2tog. 77 sts.

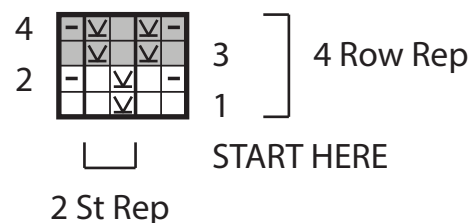
**Next 4 rows:** Knit.

**Do not** cast off.

See you next week!

### Clue #3

#### Vertical Stripes Pattern



#### KEY

- = With B, knit on RS rows. Purl on WS rows.
- = With C, knit on RS rows. Purl on WS rows.
- = With B, knit on WS rows.
- = With C, knit on WS rows.
- = With B, Sl1Pwyib on RS rows. Sl1Pwyif on WS rows.
- = With C, Sl1Pwyib on RS rows. Sl1Pwyif on WS rows.